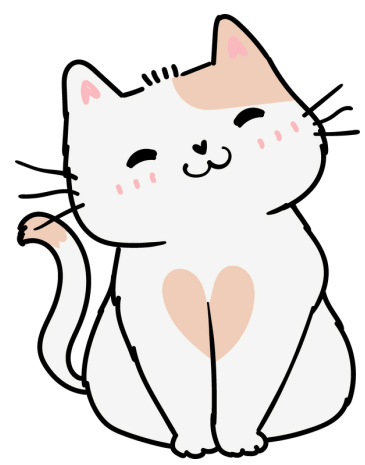


# Cat Word Search



Find the words hidden  
in the puzzle?

C	B	R	D	N	Z	P	S	E	C	T	Z	Q	X	C
I	I	C	R	F	W	L	A	N	R	U	T	C	O	N
R	V	T	N	Z	I	Z	R	I	I	V	R	T	O	Q
T	X	J	S	H	L	U	F	L	Q	R	Q	D	E	Z
R	S	V	O	E	D	W	R	E	U	J	X	J	K	R
X	E	W	S	S	M	L	G	F	E	K	A	E	H	R
K	S	W	A	L	C	O	H	U	N	T	E	R	M	U
F	I	H	H	P	P	S	D	E	A	L	E	Q	E	P
H	V	T	D	I	R	B	A	Q	S	X	U	J	O	W
Z	U	Q	T	U	S	G	T	A	I	L	S	S	W	D
R	S	N	F	E	I	K	B	L	A	J	Y	L	G	W
H	A	U	B	L	N	T	E	C	G	L	N	D	A	G
Y	Z	U	E	F	C	D	P	R	C	P	S	E	M	N
O	U	D	L	I	I	U	Y	C	S	O	U	N	N	E
M	E	J	Q	X	X	J	O	D	N	A	I	F	C	Z

**AGILE**  
**CLAWS**  
**DOMESTIC**  
**FELINE**  
**FUR**

**HUNTER**  
**KITTEN**  
**MEOW**  
**NOCTURNAL**  
**PAWS**

**PURR**  
**SLEEK**  
**TAIL**  
**WHISKERS**  
**WILD**